

## **How to INSERT A SIM**

Here is a video: [https://www.youtube.com/watch?v=2\\_EQFjUexl8](https://www.youtube.com/watch?v=2_EQFjUexl8)

Instructions:

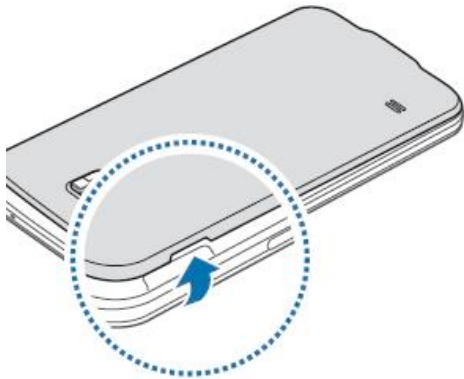
Your sim card slot will be located in a tray on the side of your device, or behind the battery cover.

See images below to assist in inserting your sim card.

*These are generic images may vary depending on your device make and model.*

### **If you have a removable battery cover**

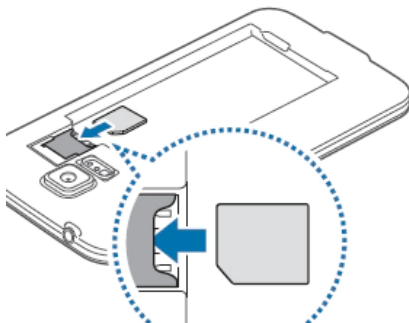
Remove the back cover



Your sim card slot may be located behind the battery

Insert the SIM card into the SIM slot with the gold contacts facing down.

The SIM slot is marked with the icon 

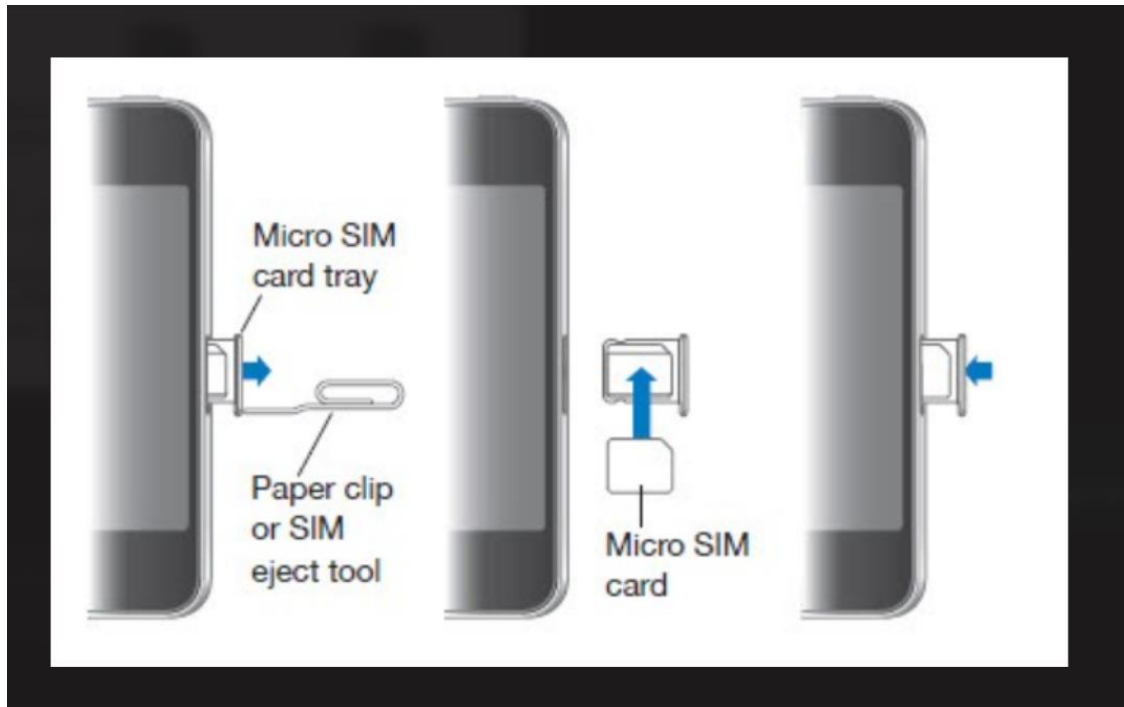


## Tray insert on the side or bottom of your device

Use a paper clip or a sim card tool to insert in the pin hole

The tray will release, remove existing sim if you have one and replace the new T-Mobile SIM card.

*Insert the new SIM card ensuring the angle fits as per diagram below*



## Power Cycle Device

Once receiving the port complete confirmation email turn device **off** – follow the power off instructions for your device.

After 10 seconds power the device **on** - You will see the start-up screen when the phone powers on successfully.

If you have any issues activating device, please contact: [support@hyperionpartners.net](mailto:support@hyperionpartners.net)